

The Snowflake Socks

Sunday, 25 April 2010 22:55



Pattern: basic toe-up sock plus a bit of colourwork - see below

Yarn: Patons Kroy Socks 4 Ply

Size: To fit me

Yardage: about 2 skein total

Needles: 2.00 mm and 2.50 mm dpns

I love these socks; I'm wearing them right now. They have a nice slightly rustic look to them with their contrast toes and heather grey yarn. I thought the yarn felt kind of rustic while I was knitting but it softened up incredibly when they went through the wash; now these are soft and cozy socks. They involved a lot of frogging though. Between me forgetting to change needle sizes, changing my mind and just making mistakes the tops of these socks have been knit at least three times each.

I think my colourwork looks better than it did the [first time](#) . I used smaller needles and held the blue in my left hand; the stitches are a little more even and the blue more noticeable. It gets kind of stretched out of shape when I pull my socks all the way up but evens out again when they slide back down to my ankles. My picot border also turned out much better; I made it a bit deeper to discourage the flipping over. Looking at it now I think it could even be a few rounds deeper but I'm not doing any more frogging on these socks.

Slouching their way down my leg is a bit of a problem (though it does make the colourwork look better) because I bound off a little tightly when I sewed the border down. I was stretching the cuffs as I went along but I guess it was not enough.

I thought I'd share my pattern, such as it is, for these socks. The colourwork panel is a 15 stitch repeat and could, of course, be used in all sorts of things that aren't socks. The pattern is for toe-up socks but if you like top-down better you can just work everything in the other direction and get pretty much the same result.

Snowflake Socks

Fingering (sock) weight yarn in two colours:

250 - 350 yards/metres MC

80 - 100 yards/metres CC

Tools:

The Snowflake Socks

Sunday, 25 April 2010 22:55

2.00 mm (US 0) needles (dpns or circulars - whichever you prefer)
2.50 mm (US 1 - 1.5) needles (for colourwork)
Darning needle

Gauge:
approx. 8 sts per inch on smaller needles

Using your preferred method and CC, cast on and knit toe. I like to use [Judy's Magic Cast-on](#). For a 60 stitch sock (to fit a foot 8 - 9 inches around the ball) cast on 24 stitches and increase every other round until you have 60 stitches.

Change to MC and knit until foot measures 2" (5 cm) less than desired length.

Work [short-row heel](#) in CC over half your stitches. For a 60 stitch sock work cross 30 stitches down to 12 and back up to 30.

Change back to MC and work until leg measures 2" (5 cm) less than desired length.

Work colourwork band as follows:

Work 2 rounds CC.

Work 2 rounds MC.

Switch to larger needles and work chart (see below).

Work 2 rounds MC.

Work 2 rounds CC.

Work 2 Rounds MC, break yarn.

Work picot cuff in CC as follows:

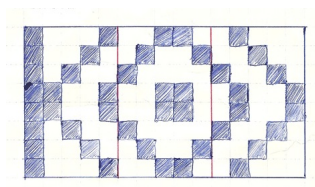
Work 5 rounds.

Work eyelet round (*YO, K2Tog* repeat around).

Work 5 rounds.

Sew down last round in inside of cuff using last row of purl bumps from MC ([this](#) is a handy tutorial).

Colourwork Chart:



Work the chart beginning at the bottom right corner. Work right to left (repeating around your sock) and top to bottom.

The Snowflake Socks

Sunday, 25 April 2010 22:55

Kind of minimalist instructions, I know, but there are so many detailed sock patterns out there I didn't think I really needed to rewrite the whole thing when others have done it better.